




Part no.	311-2555200-002
Product name	機器說明書/GRx Diagnostics/英 with warranty card
Spec	L297*W420mm/3折/銅版紙100P/雙面/黑
Designer	Emily
Color	 K:100  K:70  K:15



Operation Instructions

Distributed by GRx Diagnostics
4 Wintonlea, Monument Way West,
Woking, Surrey, GU21 5EN, UK
Website: www.grxdiagnostics.co.uk
Customer careline: 01483 755133

TaiDoc Technology Corporation
B1-7F, No. 127, Wugong 2nd Rd., Wugu Dist.,
24888 New Taipei City, Taiwan
www.taidoc.com

MedNet GmbH
Borkstraße 10, 48163 Münster, Germany



Please cut off this 'Dealer's portion' of the Warranty Registration Card, insert it in an envelope and post to:

GRx Diagnostics
4 Wintonlea, Monument Way West,
Woking, Surrey, GU21 5EN, UK

TERMS & CONDITIONS OF WARRANTY

- GRx Diagnostics warrants this product to be free of defects in workmanship and materials within the said warranty period on the Warranty Certificate.
- During the warranty period if this product is found to be defective, you may send it with the Warranty Certificate to our office for warranty service. GRx Diagnostics will then repair or replace defective parts, or exchange the whole product as GRx Diagnostics may choose, with no additional charge to the original owner. After such repair, replacement or exchange, the product will be warranted for the remaining time of the warranty period.
- This warranty is valid only if the Warranty Certificate and Warranty Registration Card are duly completed with date of obtaining product, serial number and if the Warranty Registration Card is sent to our office (or you register on our website www.grxdiagnostics.co.uk) no later than 6 months from the date obtained.
- This warranty is void if this product has been repaired or serviced by an unauthorised person. This warranty does not cover defects caused by misuse, abuse, accident, tampering, lack of reasonable care, fire or any other acts beyond human control.
- Except as stated in the above paragraphs, GRx Diagnostics disclaim all other warranties, including those of merchantability of fitness for a particular purpose with respect to the use of this product. GRx Diagnostics shall not be liable for any direct, consequential or incidental damages arising out of the use or inability to use this product.



IMPORTANT SAFETY PRECAUTIONS

Thank you for purchasing the GRx Weight Scale. This instruction manual provides important information to help you use it properly. If you have any other questions regarding this product, please contact GRx Diagnostics.

- Use this scale ONLY for the intended use described in this manual.
- Read all the instructions and information in this manual before using this scale.
- Do NOT use the scale if it is not working properly or damaged.
- Consult your physician or healthcare provider before beginning a weight loss or exercise program.
- Consult your physician before using this scale if you are pregnant.
- Do NOT step on the edge of the weighing platform or jump on the weighing platform.
- Do NOT step on the weighing platform when your body or feet are wet.
- Do not use the scale on slippery surfaces such as wet floors.
- Do NOT use microwaves or other devices that generate strong electrical or electromagnetic fields near the scale. This may interfere with the scale's operation.
- Do NOT disassemble or try to modify the scale.

KEEP THESE INSTRUCTIONS IN A SAFE PLACE

BEFORE YOU BEGIN

Body Mass Index

The Body Mass Index (BMI) is a number that is often used to evaluate body weight.

$$BMI = \frac{\text{body weight (Kg)}}{(\text{height(m)})^2} \quad BMI = \frac{\text{body weight (lb)} \times 703}{(\text{height(in)})^2}$$

Recommended Measurement Time

To obtain an accurate reading, we recommend that you always take measurement in the same environment and at the same time of day. Avoid taking measurements in the following instances:

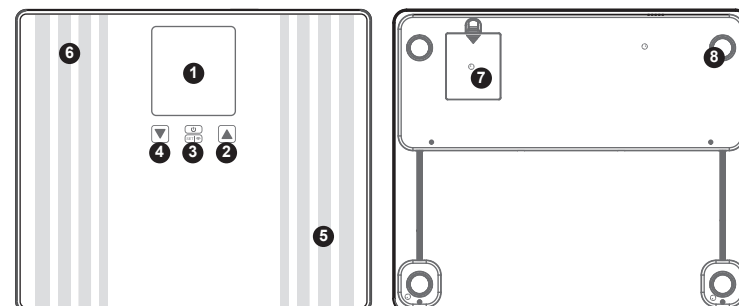
- Immediately after a bath or exercise
- After drinking alcohol or a large amount of water
- Less than 2 hours after a meal

If you take a measurement under any of the above conditions, the calculated body composition may be significantly different from the actual composition due to changes in water content in the body.

Contents of the System

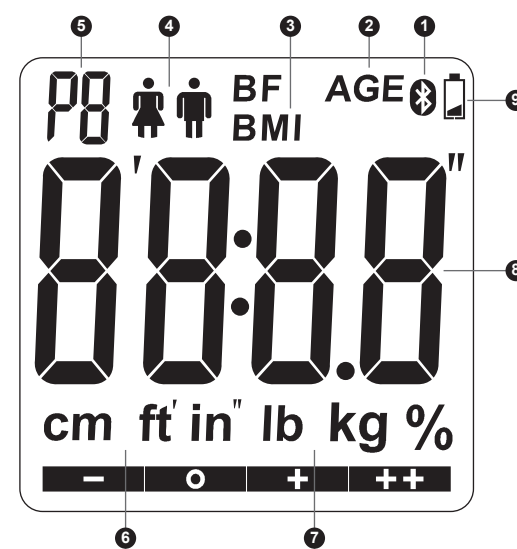
- Your new kit contains:
- Weight Scale
 - Operation Instructions with Warranty Card
 - Storage Case
 - Four 1.5V AAA Alkaline Batteries

Scale Overview



- | | |
|--|---|
| <p>Front</p> <ol style="list-style-type: none"> LCD Screen Up Button SET Button Down Button | <p>Back</p> <ol style="list-style-type: none"> Heel Position Toe Position Battery Cover / Compartment Supporting Stand |
|--|---|

Screen Display

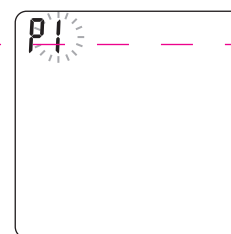


- | | |
|---------------------------|----------------------|
| 1 Bluetooth Indicator | 6 Height Unit |
| 2 Age Indicator | 7 Weight Unit |
| 3 BMI Indicator | 8 Measurement Result |
| 4 Gender Indicator | 9 Battery Indicator |
| 5 Personal Profile Number | |

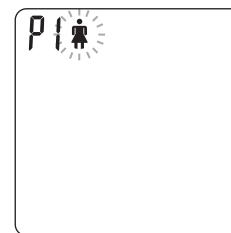
SETTING THE SCALE

Before using the scale for the first time, input these settings. To ensure accuracy, make sure you complete the steps below and save the desired settings.

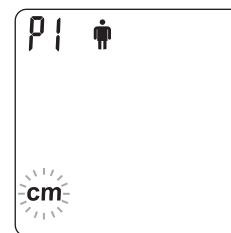
Start with the scale off. Press **SET** to turn the scale on:



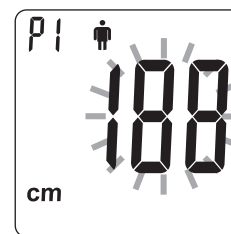
- Select the personal profile number. Press **▲** or **▼** to select a number from P1 to P5. Press **SET**.



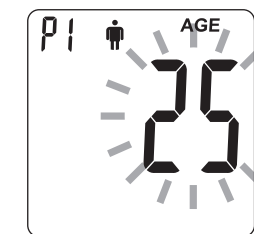
- Enter the personal profile data. Press **▲** or **▼** to set the gender to male or female. Press **SET**.



Press **▲** or **▼** to set the height unit to cm or ft' in" unit. Press **SET**.
When the height unit is set to centimetres, the unit of weight will be automatically set to kilograms. When the height unit is set to feet and inches, the unit of weight will be automatically set to pounds.



Press **▲** or **▼** to set the height between 100 cm and 220 cm / 3' 3.5" and 7' 2.5". Press **SET**.



Press **▲** or **▼** to set the age between 6 and 99. Press **SET**.

- Press **SET** to exit the setting mode. If you make a mistake before finishing setting, repeat the steps from 'Select the personal profile number.'

NOTE

These parameters can be saved promptly and automatically once you change under the setting mode.

TAKING MEASUREMENTS

Before Measuring

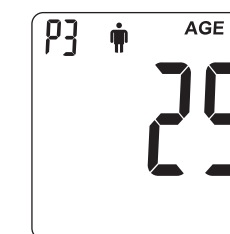
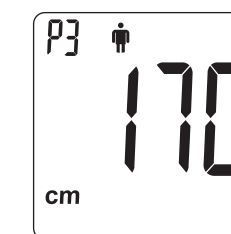
- Place the scale on a hard, flat surface. Soft or uneven flooring (e.g. carpets, rugs) may cause the scale to give an inaccurate weight reading.
- Take the measurement with dry feet, and position your feet on the scale correctly. Remove your shoes and socks before stepping onto the scale.
- Step onto the scale with your feet parallel to each other and your weight evenly distributed.
- Weigh yourself on the same scale at the same time every day, before breakfast or before getting dressed.

NOTE

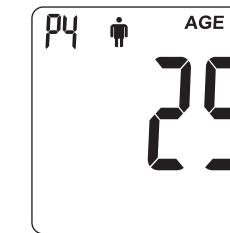
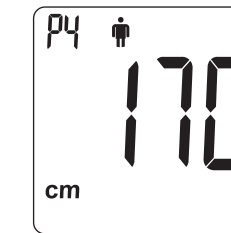
If there is any movement of the scale or it is being used for the first time, press **SET** to turn the scale on - 0.0 will show on the display. Please wait for 2 seconds and then start the measurement.

Measuring Body Mass Index (BMI)

- Press **SET** or tap on the weighing platform to turn on the scale. The scale displays the profile setting of the last user.

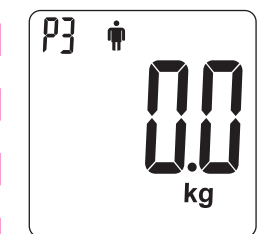


Press **▲** or **▼** to select the number.



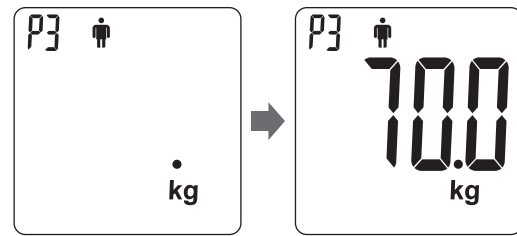
NOTE

The scale will automatically turn on if you step on the weighing scale under standby mode.



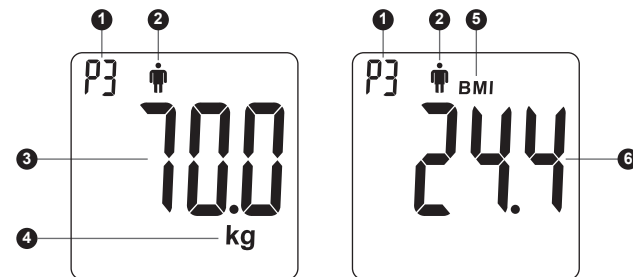
- The scale displays the profile setting of the last user. Wait for "0.0" to appear on the LCD.

3. Step onto the weighing platform.
Stand still and distribute your weight evenly while the scale is measuring your weight.



When the value is stabilised, it will flash three times and the scale will then calculate your BMI.

4. Displaying the result.
The scale shows your measurement results as follows:



- 1 Personal Profile Number
- 2 Gender: Male or Female
- 3 Your Weight
- 4 Weight Unit
- 5 BMI Indicator
- 6 Your BMI

5. Step off the weighing platform.
The result is saved in the scale memory and can enter Bluetooth mode.

SCALE MEMORY

Your scale stores measurement results with the corresponding personal profile number in its memory.

Results in memory can be transmitted to a mobile device by wireless connection.

This allows you to transmit and review up to 135 sets of measurement results on a mobile device.

BLUETOOTH PAIRING

You can transmit data from the scale to your devices via Bluetooth. Please note that you must complete the pairing between the scale and Bluetooth receiver before transmitting data.

You can use the GRx Weight Scale with the GRx HC APP. GRx HC APP is available on the App Store/Google Play for free download. Connect your mobile device to the internet to search and download the GRx HC APP.

Pairing with your mobile device

1. Turn on the Bluetooth function on your mobile device.
2. With the scale off, press and hold the SET button until the Bluetooth indicator is displayed on the screen.
3. Follow the instruction of the GRx HC APP to pair the device. (Search to find the scale and then add it into app)
4. After successfully pairing the GRx HC APP with the device, your Bluetooth function of the scale shall be on before transmitting data to your APP.

Bluetooth indicator on the weight scale

BLUETOOTH INDICATOR	STATUS
Flashing indicator	The Bluetooth function is on and waiting for connection.
Solid indicator	The Bluetooth connection is established.

NOTE

- While the scale is in transmission mode, it is unable to measure your weight.
- Make sure your device supports Bluetooth Smart Technology and has Bluetooth actually turned on with the scale, within the receiving range, before transmitting the data. For iOS and Android devices, please find the GRx HC APP on the App Store and Google Play respectively.
- The Bluetooth functionality is implemented in different ways by the various mobile device manufacturers; incompatibility issues between your mobile device and the scale may occur.



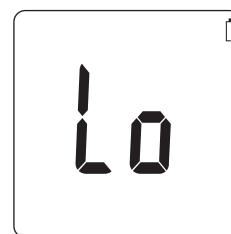
Support Mobile:
iOS or Android and Bluetooth 4.0



MAINTENANCE

Your scale takes four 1.5V AAA alkaline batteries.

Low Battery Signal



The scale will display the message shown to alert you when the power is running low. This means it is time to replace the battery.

WARNING!

If the incorrect type of battery is used, it may cause damage to the scale.

Replacing the Battery

When replacing the battery, make sure that the scale is turned off.

1. Press the edge of the battery cover and lift it up.
2. Remove the old batteries and replace them with four 1.5V AAA alkaline batteries
3. Close the battery cover.

NOTE

- Replacing the batteries does not affect the results stored in memory.
- Properly dispose of the batteries according to your local environmental regulations.
- Batteries may leak chemicals if left unused for a long time. Remove the batteries if you are not going to use the scale for an extended period (i.e. 3 months or more).

Cleaning

1. To clean the outside of the scale, wipe it with a cloth slightly dampened with water or a mild cleaning agent, then dry with a soft dry cloth. Do NOT immerse the scale in water.
2. Do NOT use chemicals or organic solvents to clean the scale.
3. Wipe the scale clean at once if any grease, sauce, vinegar, juice or other substances that may cause damage are spilled on it.

Scale Storage

1. Storage condition: -25°C to 70°C (-13°F to 158°F), below 93% relative humidity.
2. Avoid dropping the scale or heavy impact.
3. Avoid direct sunlight and high levels of humidity.

SYSTEM TROUBLESHOOTING

Error Messages

MESSAGE	WHAT IT MEANS	WHAT TO DO
H1	The weighing subject exceeds the maximum capacity of the scale.	Remove the weighing subject from the platform to avoid damage.

If you follow the recommended action but the problem persists, please contact GRx Diagnostics. Do not attempt to repair or disassemble the scale by yourself.

SYMBOL INFORMATION

Symbol	Referent	Symbol	Referent
	Manufacturer		Collection for electrical and electronic equipment
	Consult instructions for use		Caution, consult accompanying documents
	Serial number		Temperature limitation
	Authorised representative in the European Community		Humidity limitation
	Type BF Equipment		CE mark

SPECIFICATIONS

General Information

Model no.: TD-2555
Power source: Four 1.5V AAA alkaline batteries
Dimensions & Weight: 340 (L) x 400 mm (W) x 26 mm (H), 3200 g without batteries
Size of LCD: 98 (L) x 92 (W) (mm)
LCD: Backlight LCD
Range:
 Gender: Male / Female
 Height: 100 to 220 cm / 3' 3.5" to 7' 2.5"
 Age: 6 to 99
 Weight: 4 to 250 kg / 8.8 to 550 lb
Memory capacity: 135 sets
Accuracy: ±0.3kg for the range of 4.0kg to 60.0kg / ±0.5% for the range of 60.1kg to 250.0kg
Operating conditions: 5 °C to 40 °C (41°F to 104°F), below 85% R.H.
Storage conditions: -25°C to 70°C (-13°F to 158°F), below 93% R.H.
Battery life: At least 180 measurements (3 minutes each time) or at least 3 months on standby.
User profile: 5 individuals
Weight unit: lb / kg
Transmission: Bluetooth
Auto switch-off: (1) If the scale is left idle for 30 seconds during the measuring mode, it will switch off automatically.
 (2) If the scale is left idle for 3 minutes during the Bluetooth mode, it will switch off automatically.

This device has been tested to meet the electrical and safety requirements of: IEC/EN 61010-1, IEC/EN 61326-1, EN 301 489-1, EN 301 489-17, EN 300 328.

[Dealer's Portion]

WARRANTY REGISTRATION CARD



Product Name:
 Owner's Name:
 Address:
 Tel No: (M) (H) (W)
 Email:
 Date of Birth: Gender: M F

Date obtained: / / Serial No:

GP Surgery name and Address:

*IMPORTANT: To qualify for the warranty, please fill in this card and mail to us within 6 months from date product obtained.

[Owner's Portion]

YEAR WARRANTY



WARRANTY CERTIFICATE

Product Name:
 Owner's Name:
 Address:
 Tel No: (M) (H) (W)
 Email:
 Date of Birth: Gender: M F

Date obtained: / / Serial No:

GP Surgery name and Address:

*NOTE: Please produce this card for warranty service.