

Part no.	311-1115300-xxx
Product name	機器說明書/GRx/英(blister)
Spec	L152*W465mm/3折/銅版紙100P/雙面/4C
Designer	Sam
Color	■ K:100 ■ C:40 Y:5

WARRANTY REGISTRATION CARD

Product Name:
 Owner's Name:
 Address:
 Tel No: (M) (H) (W)
 Date obtained: / / Serial No: / / Year
 Day Month Year
 GP Surgery name and Address:
 Email:
 Date of Birth: Gender: M F

[Owner's Portion]

WARRANTY CERTIFICATE

YEAR WARRANTY

Quality Diabetic Care

Product Name:
 Owner's Name:
 Address:
 Tel No: (M) (H) (W)
 Date obtained: / / Serial No: / / Year
 Day Month Year
 GP Surgery name and Address:
 Email:
 Date of Birth: Gender: M F

*NOTE: Please produce this card for warranty service.

Important Safety Instructions

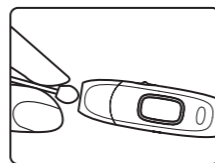
1. Close supervision is necessary when the thermometer is used on children or handicapped persons.
2. Use the thermometer only for the intended use described in this manual.
3. Do not use the thermometer if it is not working properly, or if it has been damaged.
4. Do not use accessories which are not supplied or recommended by the manufacturer.
5. Proper maintenance is essential to the longevity of this device. If you are concerned about your accuracy of measurement, please contact GRx Diagnostics for help.

Cautions and Warnings

1. As with any thermometer, proper technique is crucial to getting accurate temperature readings. **Please read this operation instruction thoroughly and carefully before using.**
2. Always operate the thermometer in an operating temperature range 10°C to 40°C (50°F to 104°F), and relative humidity less than 95%.
3. Always store the thermometer in a cool and dry place: temperatures between -20°C to 60°C (-4°F to 140°F); relative humidity less than 95%. **Avoid direct sunlight and avoid dropping** the thermometer.
4. **Do not** disassemble the thermometer.
5. Basic safety precautions should always be observed, especially when the thermometer is used on children or handicapped persons.
6. This thermometer is not intended to be a substitution for a consultation with your physician.

Care And Cleaning

- The probe is not waterproof. Please wipe with a clean and dry cotton swab to clean the probe on the inside.
- The body of the thermometer is water-resistant. Use a soft and dry cloth to clean it. Do not use abrasive cleaners.
- Store the thermometer in a cool and dry place, free from dust and away from direct sunlight.



Symbol Information

Symbol	Referent	Symbol	Referent
	Consult instructions for use		Collection for electrical and electronic equipment
	Manufacturer		Type BF Equipment
SN	Serial number		Temperature limitation
	Caution, consult accompanying documents		Humidity limitation
	Authorised representative in the European Community		CE mark
IP22	Ingress protection rating		

Reference Standards

Device Standard:
 Device Corresponds to the requirements of the standard for infrared thermometers
 ASTM E1965-98, EN ISO 80601-2-56,
 EN 60601-1, EN 60601-1-2,
 EN 60601-1-6
 Electromagnetic Compatibility:
 Device fulfills the stipulations of the standard EN 60601-1-2

The stipulations of EU-Directive 93/42/EEC for Medical Devices Class IIa have been fulfilled.

Specifications

Model no.	TD-1115
Dimensions	127.7mm x 37.7mm x 20.7mm
Weight	56.2 g
Battery	One 3V CR2032 lithium battery
Displayed temperature range	Forehead: 34.4°C to 42.2°C (93.9°F to 108°F) Surface: 1°C to 60°C (33.8°F to 140°F)
Display resolution	0.1°C /0.1°F
Accuracy	±0.2°C (±0.4°F) for the range of 35.0°C to 42.0°C (95°F to 107.6°F) / ±0.3°C (±0.5°F) for the other range
Temperature unit	either °C or °F
Operating temperature range	10°C to 40°C (50°F to 104°F)
Operating humidity	95% RH or less
Storage temperature range	-20°C to 60°C (-4°F to 140°F)
Storage humidity	95% RH or less
Waterproof	IP22
Expected Service Life	3 years

Forehead Thermometer Mini



Infrared Technology



3 Colour Indicators



Forehead/ Room Mode Measurement

Distributed by GRx Diagnostics
 4 Wintonlea, Monument Way West,
 Woking, Surrey, GU21 5EN, UK
 Website: www.grxdiagnostics.co.uk
 Customer careline: 01483 755133

TaiDoc Technology Corporation
 B1-7F, No. 127, Wugong 2nd Rd., Wugu Dist.,
 24888 New Taipei City, Taiwan
 MedNet GmbH
 Borkstraße 10, 48163 Münster, Germany



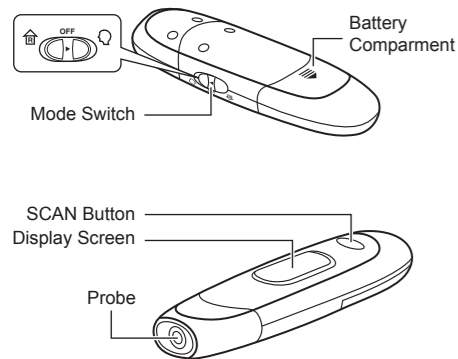
5 060342 241726

Forehead Thermometer Mini

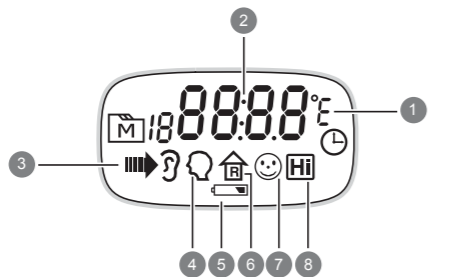


TD-1115

Appearance And Key Functions

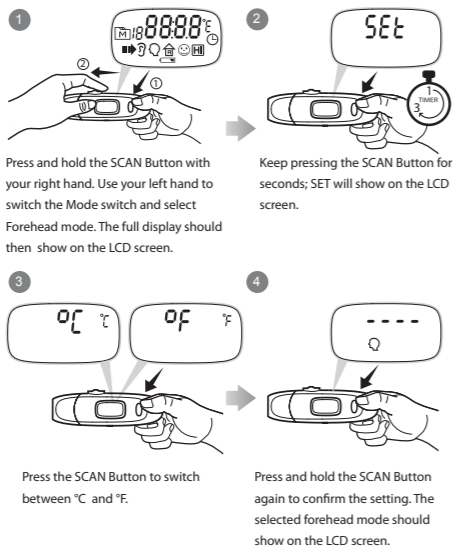


LCD Screen



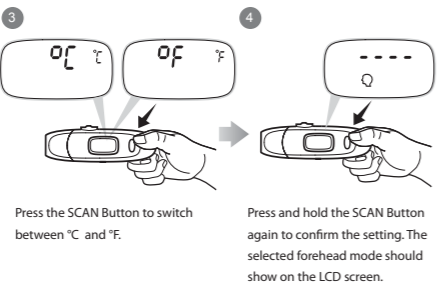
1. Temperature unit
2. Temperature display
3. Temperature scanning in progress
4. Forehead temperature indicator
5. Low battery indicator
6. Object surface temperature indicator
7. Smiley face indicator (Temperature falls within normal range)
8. High temperature indicator

Select The Temperature Unit



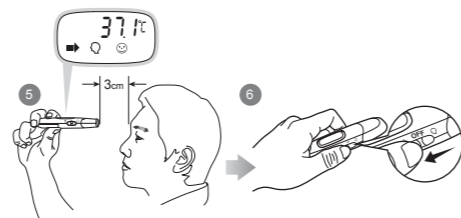
Press and hold the SCAN Button with your right hand. Use your left hand to switch the Mode switch and select Forehead mode. The full display should then show on the LCD screen.

Keep pressing the SCAN Button for 3 seconds; SET will show on the LCD screen.



Press the SCAN Button to switch between °C and °F.

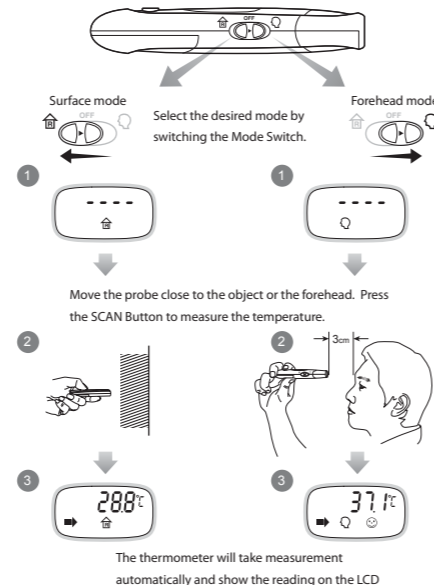
Press and hold the SCAN Button again to confirm the setting. The selected forehead mode should show on the LCD screen.



Move the probe close to the forehead within 3 cm. Press the SCAN Button to measure the forehead temperature. The thermometer will take measurement automatically and show the reading on the LCD screen.

Switch the Mode Switch to OFF to turn off the thermometer.

Perform The Test

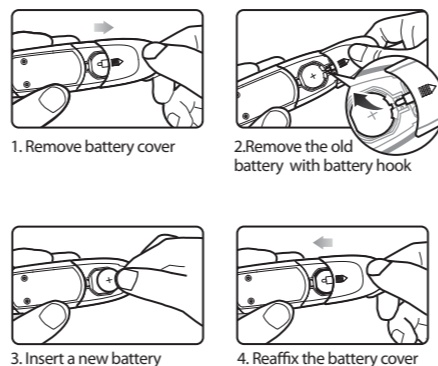


NOTE
While in surface mode, the measurement will perform continuously if you press and hold the scan button without release.

Result Indicators

	Temperature falls within measurement range: 34.4°C to 37.9°C (93.9°F to 100.3°F) and the LCD backlight displays "Green".
	Temperature falls within measurement range: 38.0°C to 42.2°C (100.4°F to 108°F) and the LCD backlight displays "Red".
	Temperature falls outside the displayed range: • Hi-temperature $\geq 42.3^\circ\text{C}$ (108.1°F) • Lo-temperature $\leq 34.3^\circ\text{C}$ (93.8°F) Appropriate Indicator is shown on the display with "Blue" LCD backlight.

Replacing The Battery



Troubleshooting

Message	What it means	What to do
	Environmental temperature is below or above system operation range.	Put the thermometer under operating temperature range, 10°C to 40°C (50°F to 104°F)
	Problem with the thermometer.	Review the instructions and re-start the measurement. If the steps do not work, contact GRx Diagnostics.
	Battery is low and "Lo" appears on LCD.	The device is functional and the result remains accurate, but it is time to change the battery.
	The battery cannot provide enough power for a test. After 3 beeps, the thermometer will turn off automatically.	Replace battery immediately.

Detailed Information

Body temperature can vary from one individual to the next. It also varies by location on the body and time of day. The below table shows the statistical normal ranges at various sites. Please keep in mind that temperatures measured from different sites, even at the same time, should not be directly compared.

Table *1 Body Site Normal Temperature Range

Oral	0.6°C (1°F) or more above or below 37°C (98.6°F)
Rectal/Ear	0.3°C to 0.6°C (0.5°F to 1°F) higher than oral temperature
Axillary (armpit)	0.3°C to 0.6°C (0.5°F to 1°F) lower than oral temperature

*1. Body Temperature at WebMD; website: <http://firstaid.webmd.com/body-temperature> retrieved at 2010 Jan 7.

TERMS & CONDITIONS OF WARRANTY

- GRx Diagnostics warrants this product to be free of defects in workmanship and materials within the said warranty period on the Warranty Certificate.
- During the warranty period if this product is found to be defective, you may send it with the Warranty Certificate to our office for warranty service. GRx Diagnostics will then repair or replace defective parts, or exchange the whole product as GRx Diagnostics may choose, with no additional charge to the original owner. After such repair, replacement or exchange, the product will be warranted for the remaining time of the warranty period.
- This warranty is valid only if the Warranty Certificate and Warranty Registration Card are duly completed with date of obtaining product, serial number and if the Warranty Registration Card is sent to our office (or you register on our website www.grxdiagnostics.co.uk) no later than 6 months from the date obtained.
- This warranty is void if this product has been repaired or serviced by an unauthorised person. This warranty does not cover defects caused by misuse, abuse, accident, tampering, lack of reasonable care, fire or any other acts beyond human control.
- Except as stated in the above paragraphs, GRx Diagnostics disclaim all other warranties, including those of merchantability of fitness for a particular purpose with respect to the use of this product. GRx Diagnostics shall not be liable for any direct, consequential or incidental damages arising out of the use or inability to use this product.

Please cut off this 'Dealer's portion' of the Warranty Registration Card, insert it in an envelope and post to:

GRx Diagnostics
4 Wintonlea, Monument Way West,
Woking, Surrey, GU21 5EN, UK

